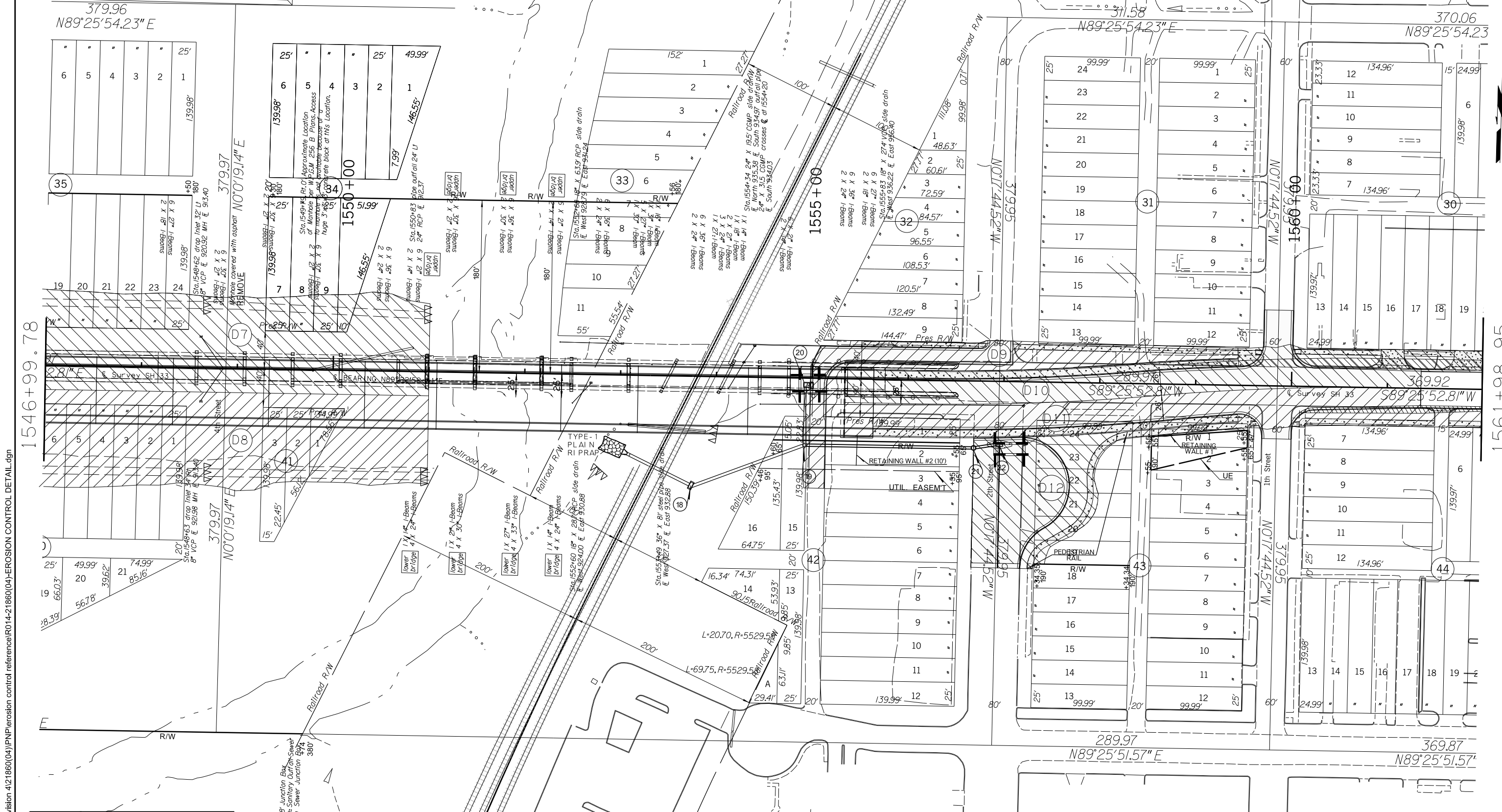


24" Storm Sewer as shown between the manhole at Sta. 1529+88 (9th Street) and the manhole at Sta. 1548+88 (4th Street) is an approximate location only. Manhole positions were located per magnetic noise from manhole covers. Grade for Storm Sewer beginning at the manhole at 9th Street was measured in the field. Grade between the manhole at 9th Street and the manhole at 5th Street was shown as a straight grade from measured flowline at 9th Street to approximate flowline at the manhole at 5th Street per W.P.G.M. 256 B Plans. Grade forward from 5th Street was a combination of plans and field data.



08-19-16 Y:\Division 4121860(04)\P\Erosion control reference\R014-21860(04)-EROSION CONTROL DETAIL.dgn

KEY	
	TEMPORARY SILT DIKE
	TEMPORARY FIBER LOG
	DRAINAGE AREA

549.33 R.I. 8" x 8" Junction Box
 RCP I.E. 913.64
 Note: Sanitary Sewer runs through Storm Sewer Junction. E.P. Sewer Line 916.46.

DESIGN	MRB	1/16	OKLAHOMA DEPARTMENT OF TRANSPORTATION ROADWAY DESIGN DIVISION
DRAWN	MRB	1/16	
CHECKED			
APPROVED			
SQUAD	GREEN		EROSION CONTROL DETAIL
COUNTY	LOGAN CO.	HIGHWAY	
STATE JOB NO.		JP21860(04)	SHEET NO. R014